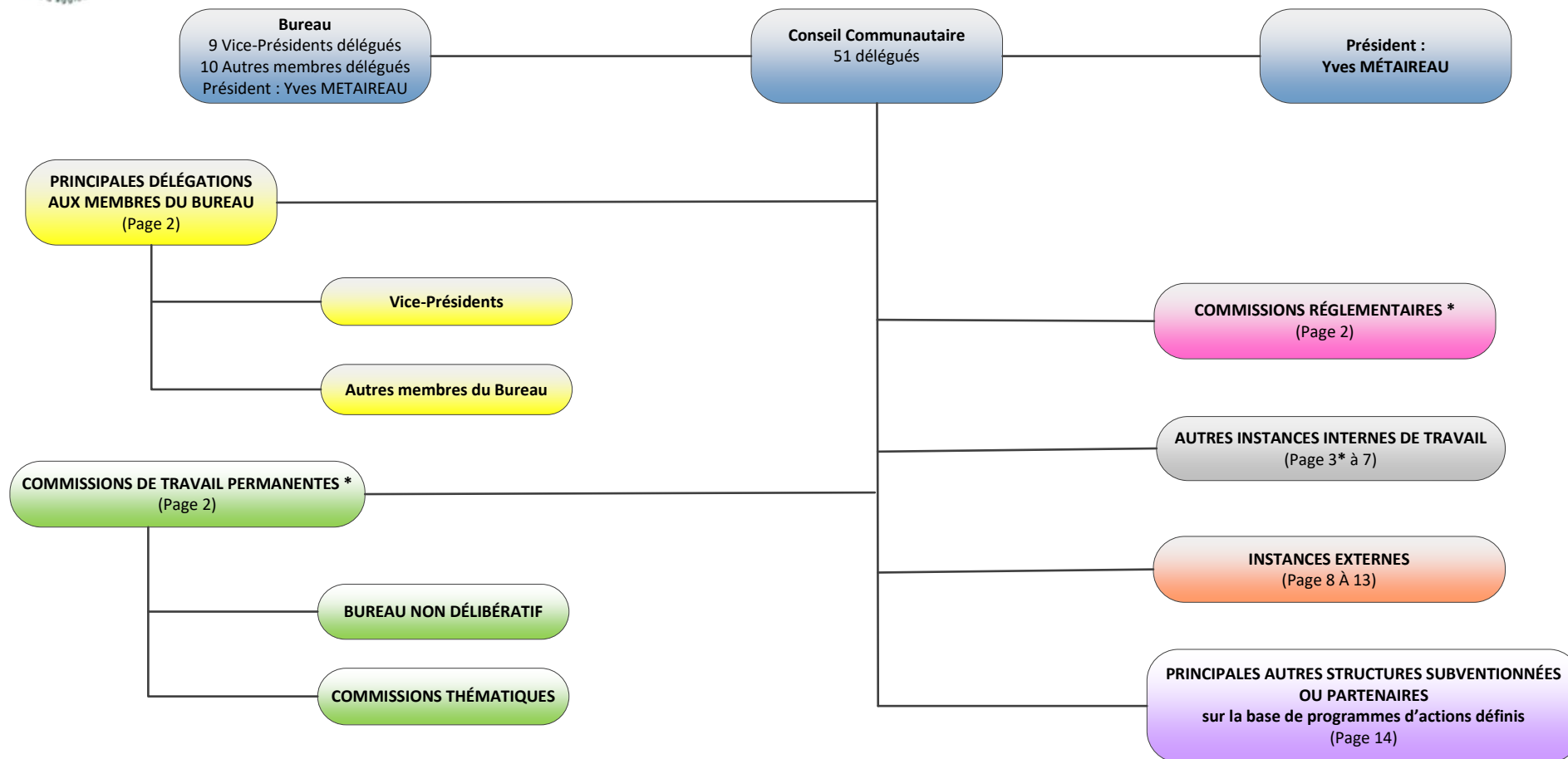


# ORGANIGRAMME INSTITUTIONNEL DE LA MANDATURE 2014-2020

## Plan schématique du document

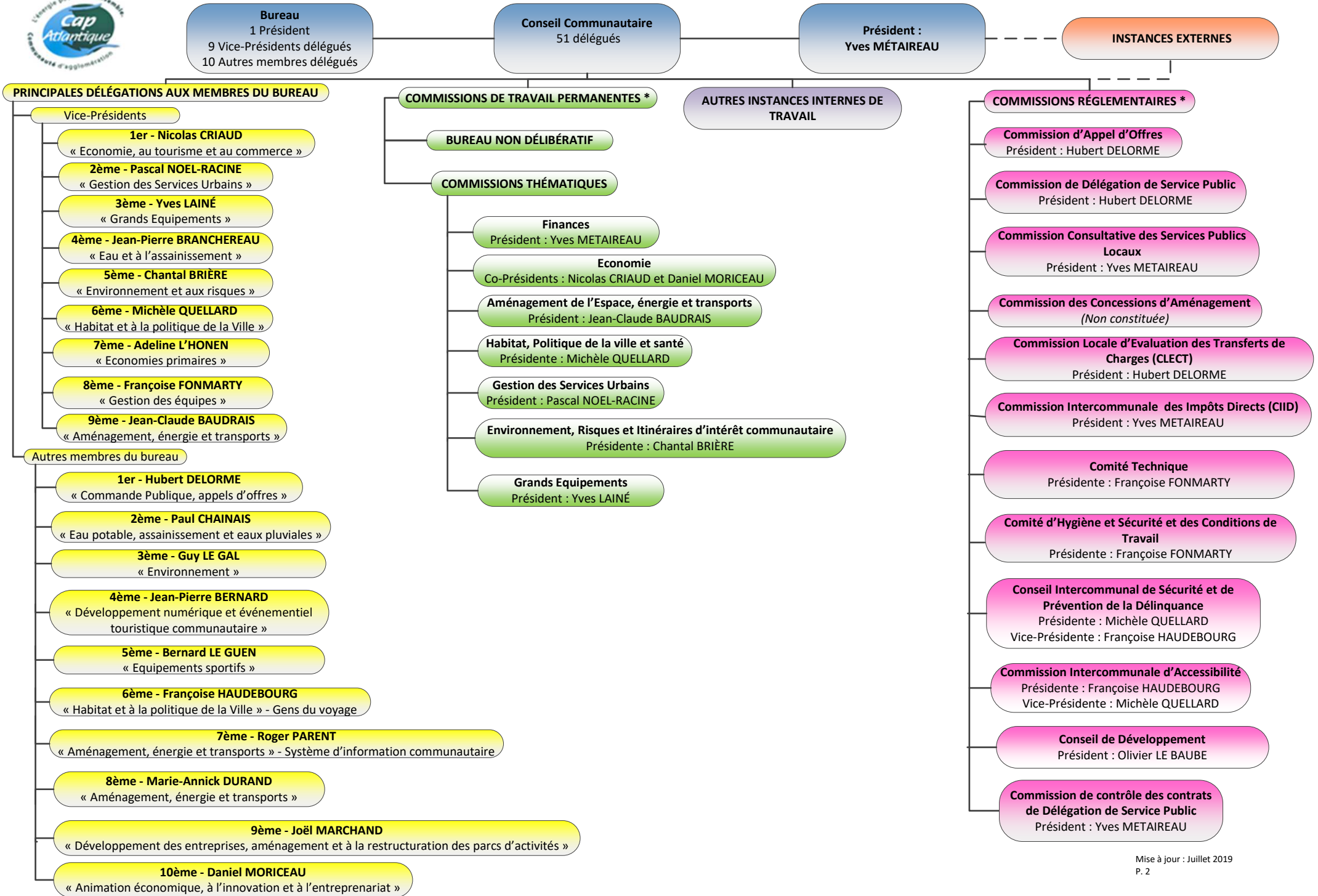


€ Organisme générant une dépense pour Cap Atlantique

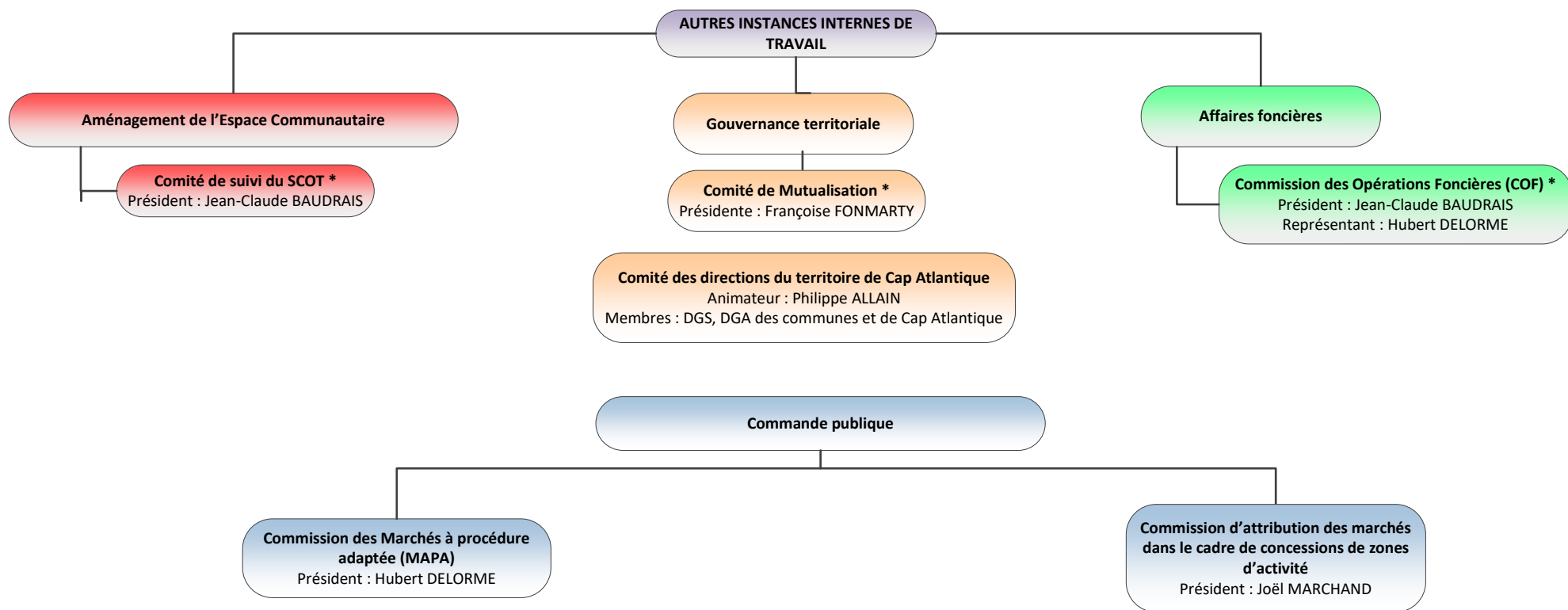
\* Créées par le Règlement Intérieur - Service « Assemblées »



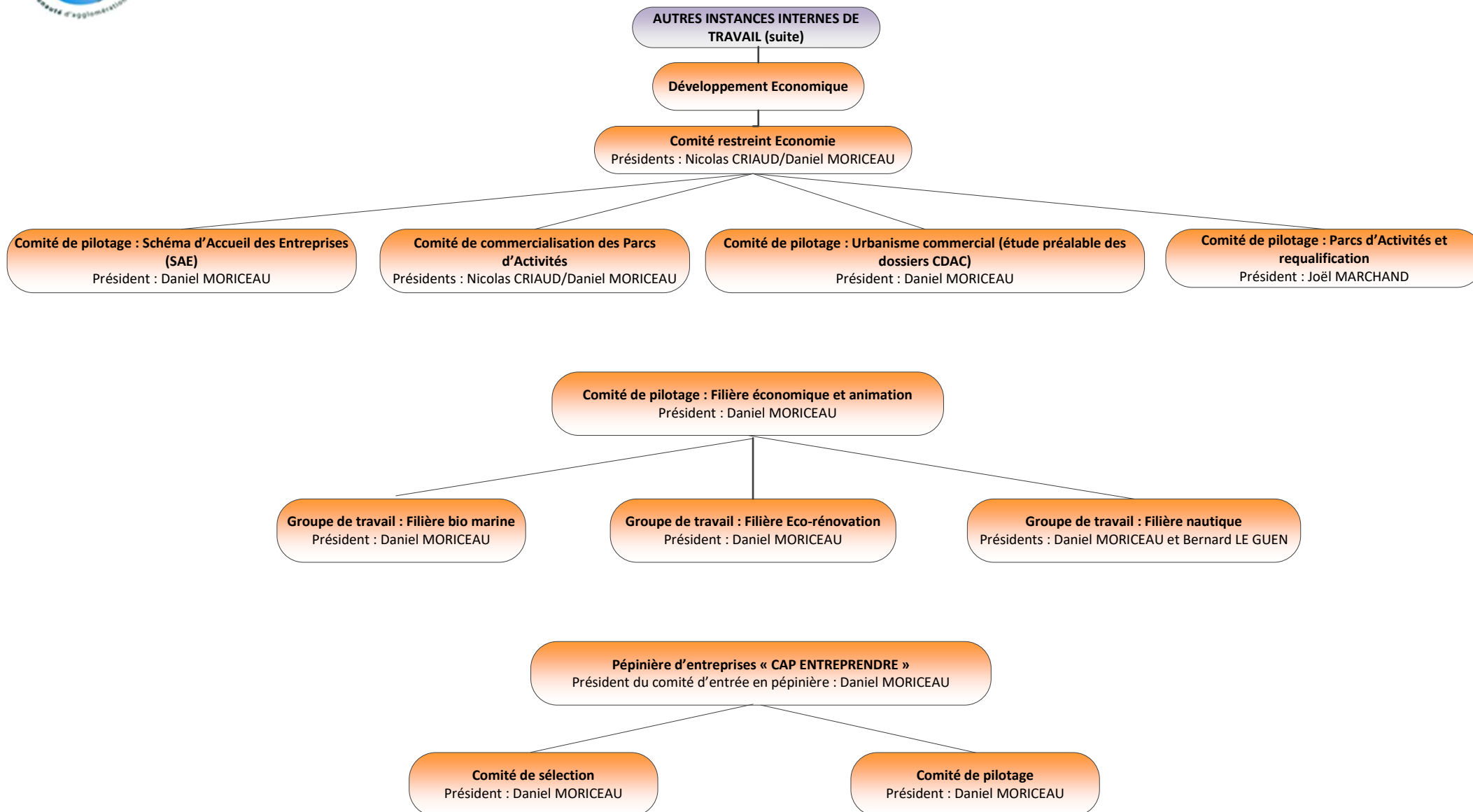
# ORGANIGRAMME INSTITUTIONNEL DE LA MANDATURE 2014-2020



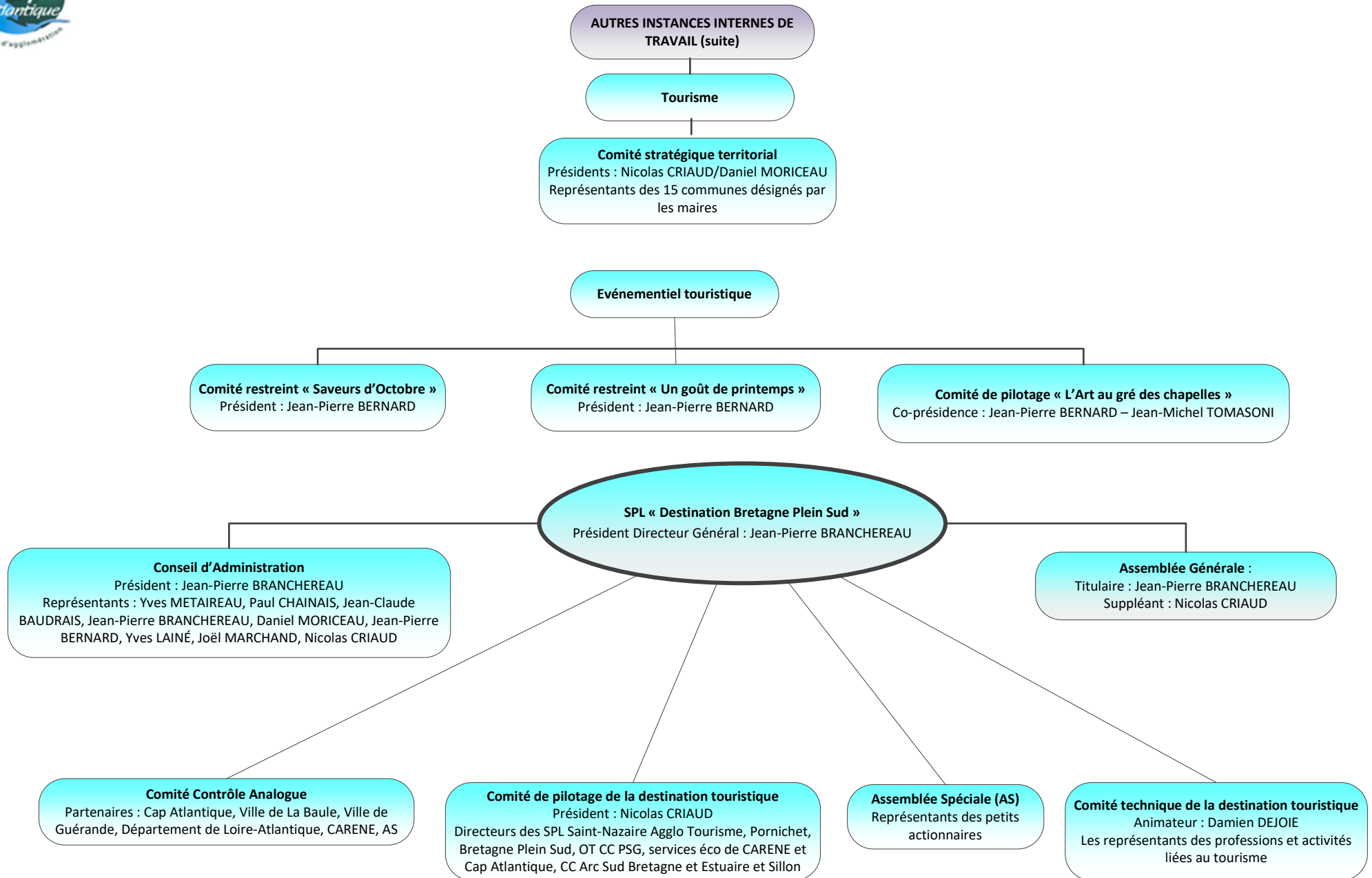
# ORGANIGRAMME INSTITUTIONNEL DE LA MANDATURE 2014-2020



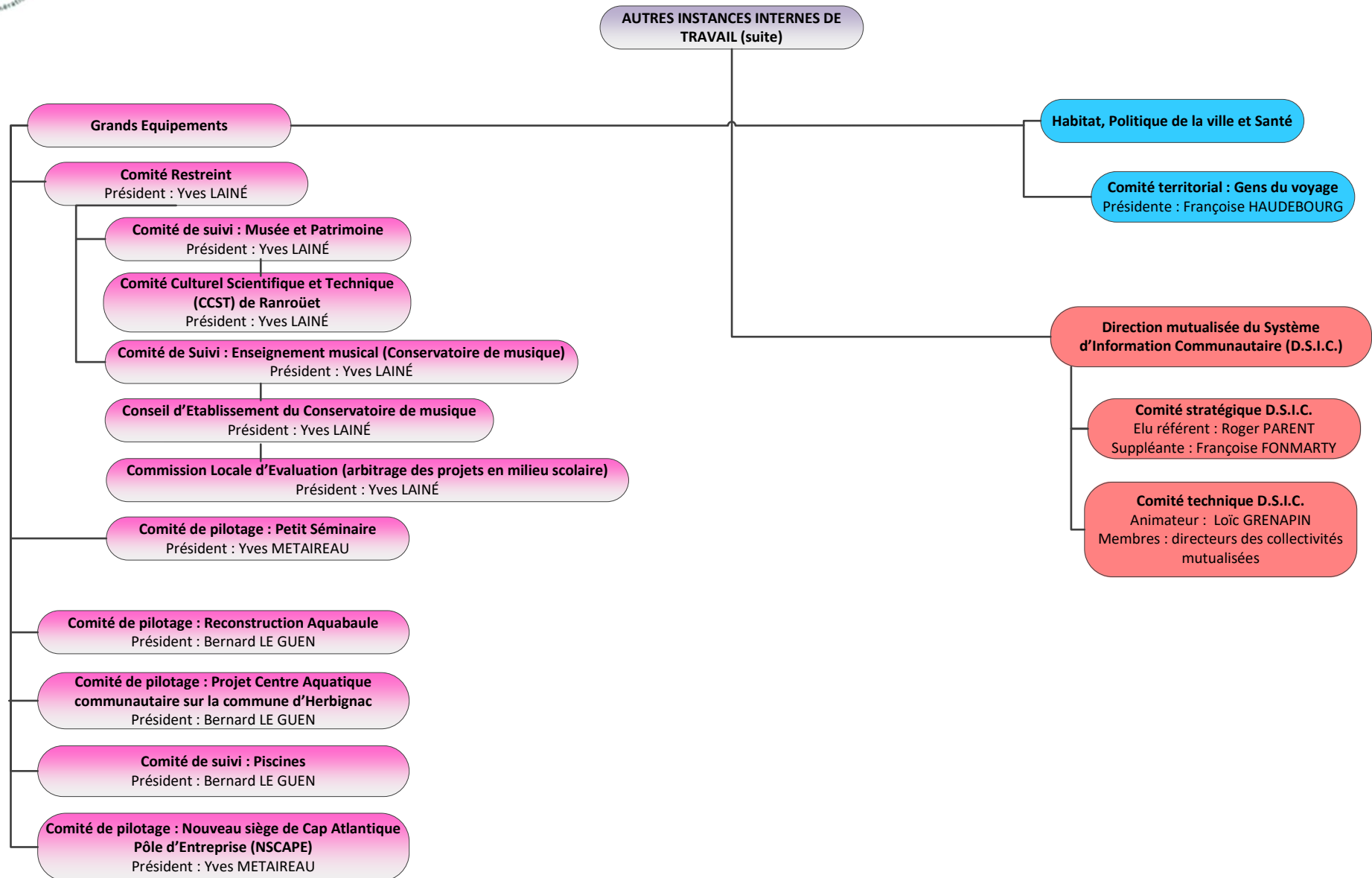
## ORGANIGRAMME INSTITUTIONNEL DE LA MANDATURE 2014-2020



# ORGANIGRAMME INSTITUTIONNEL DE LA MANDATURE 2014-2020

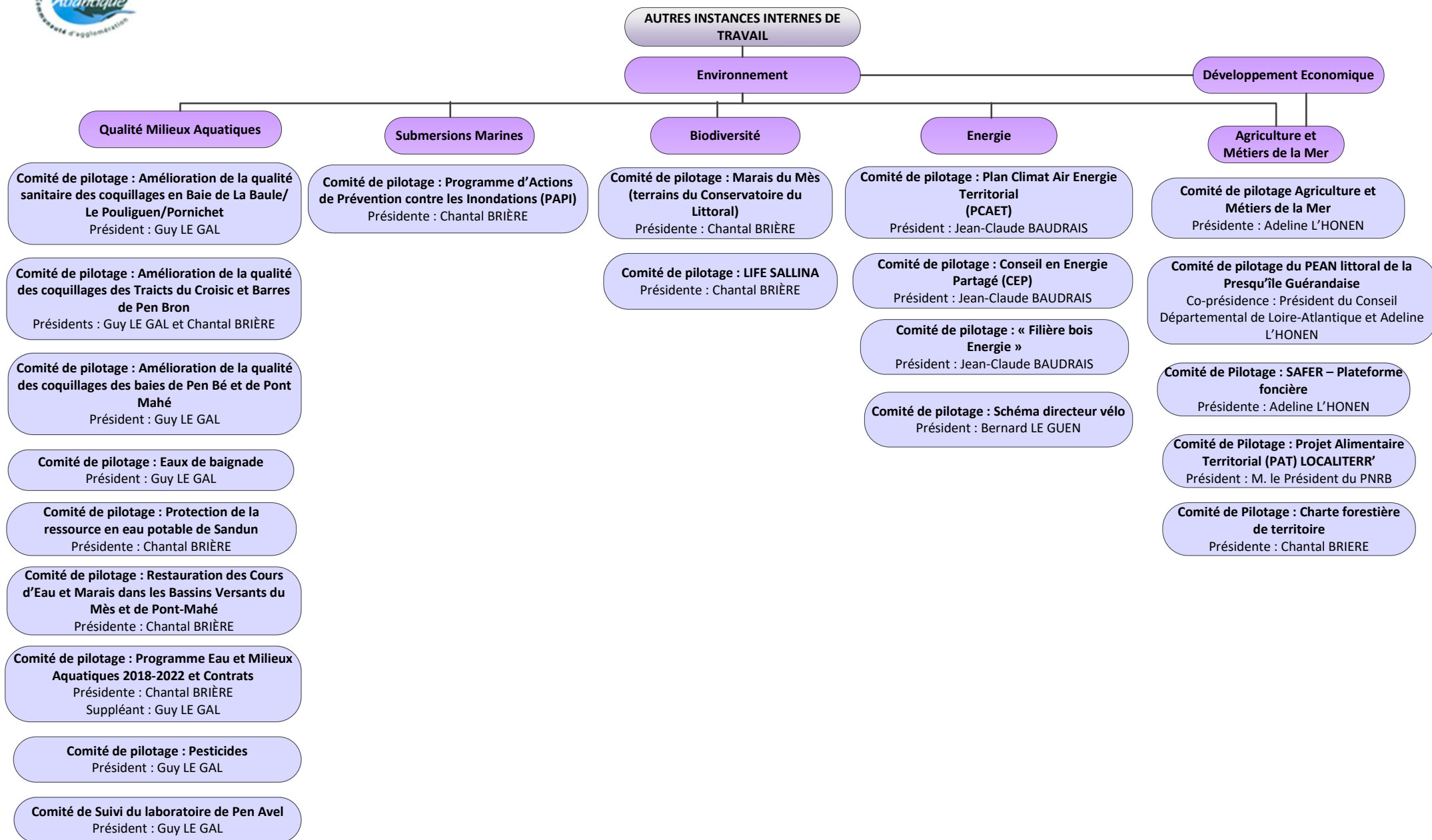


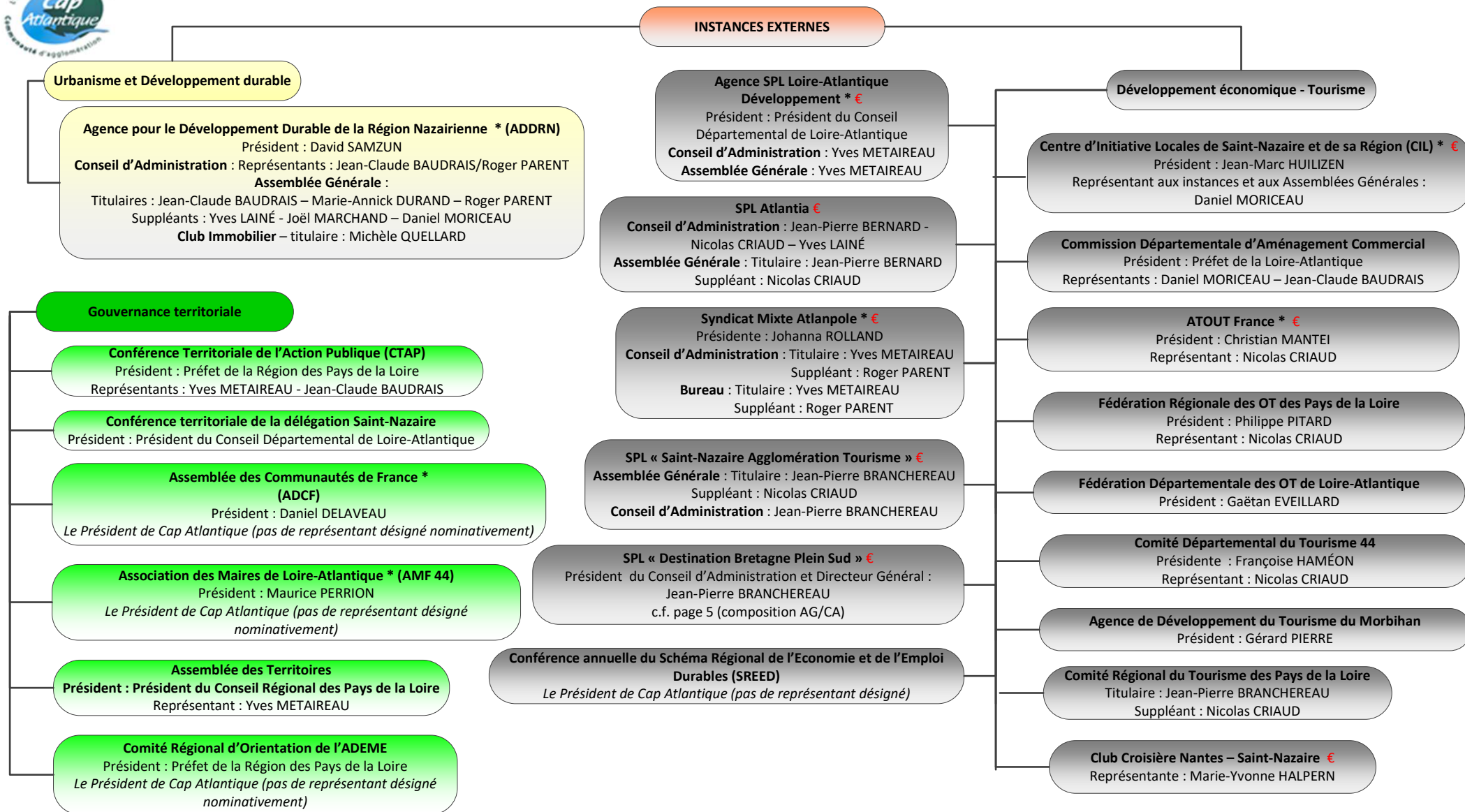
# ORGANIGRAMME INSTITUTIONNEL DE LA MANDATURE 2014-2020



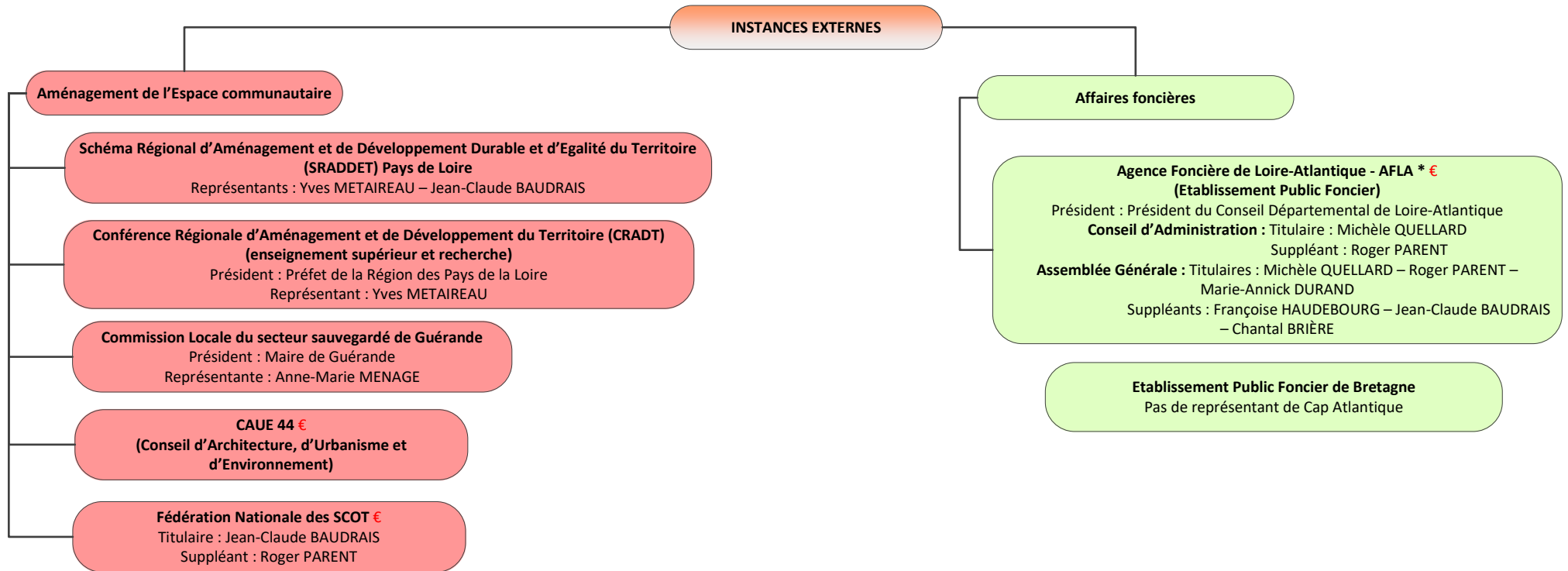


# ORGANIGRAMME INSTITUTIONNEL DE LA MANDATURE 2014-2020

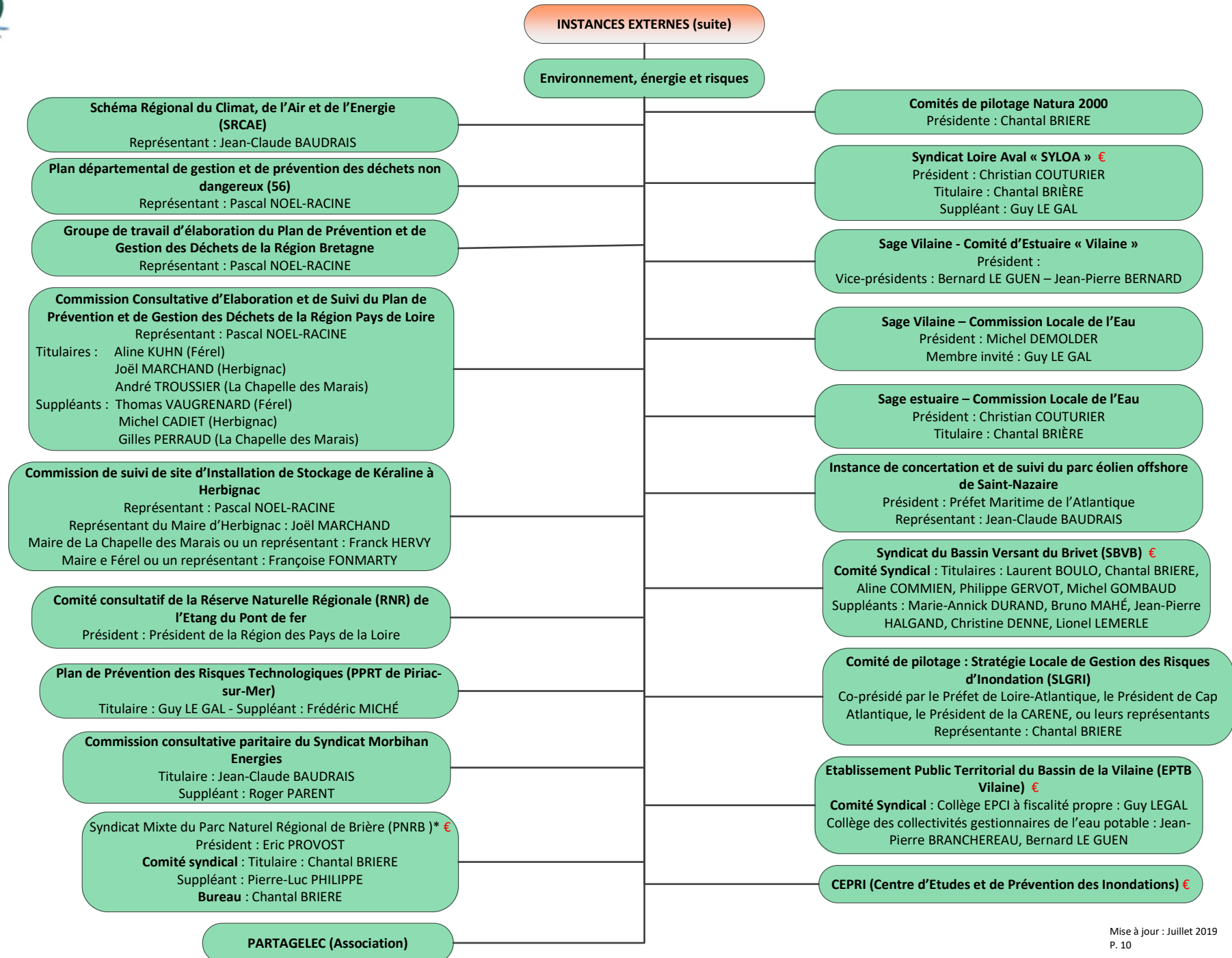




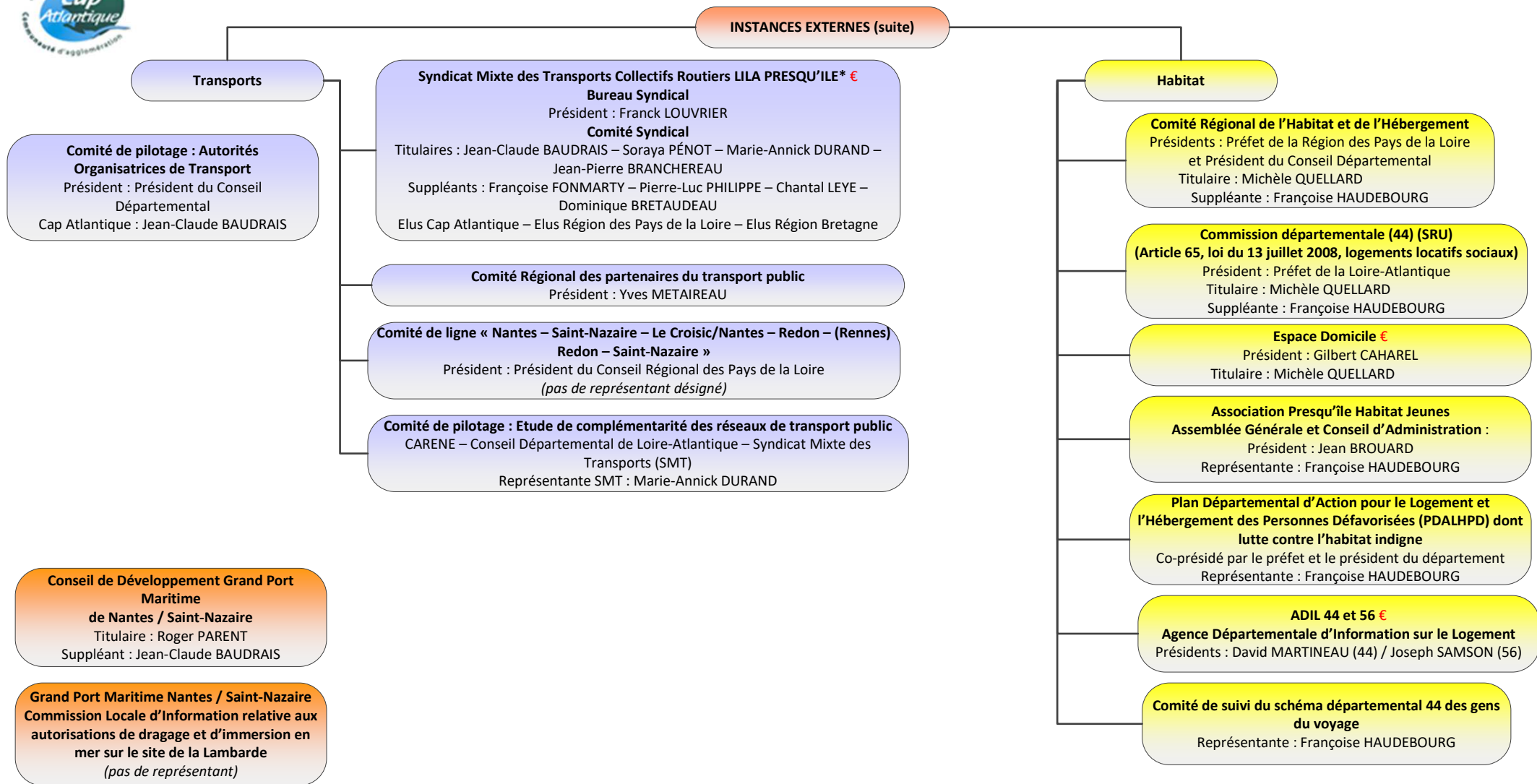


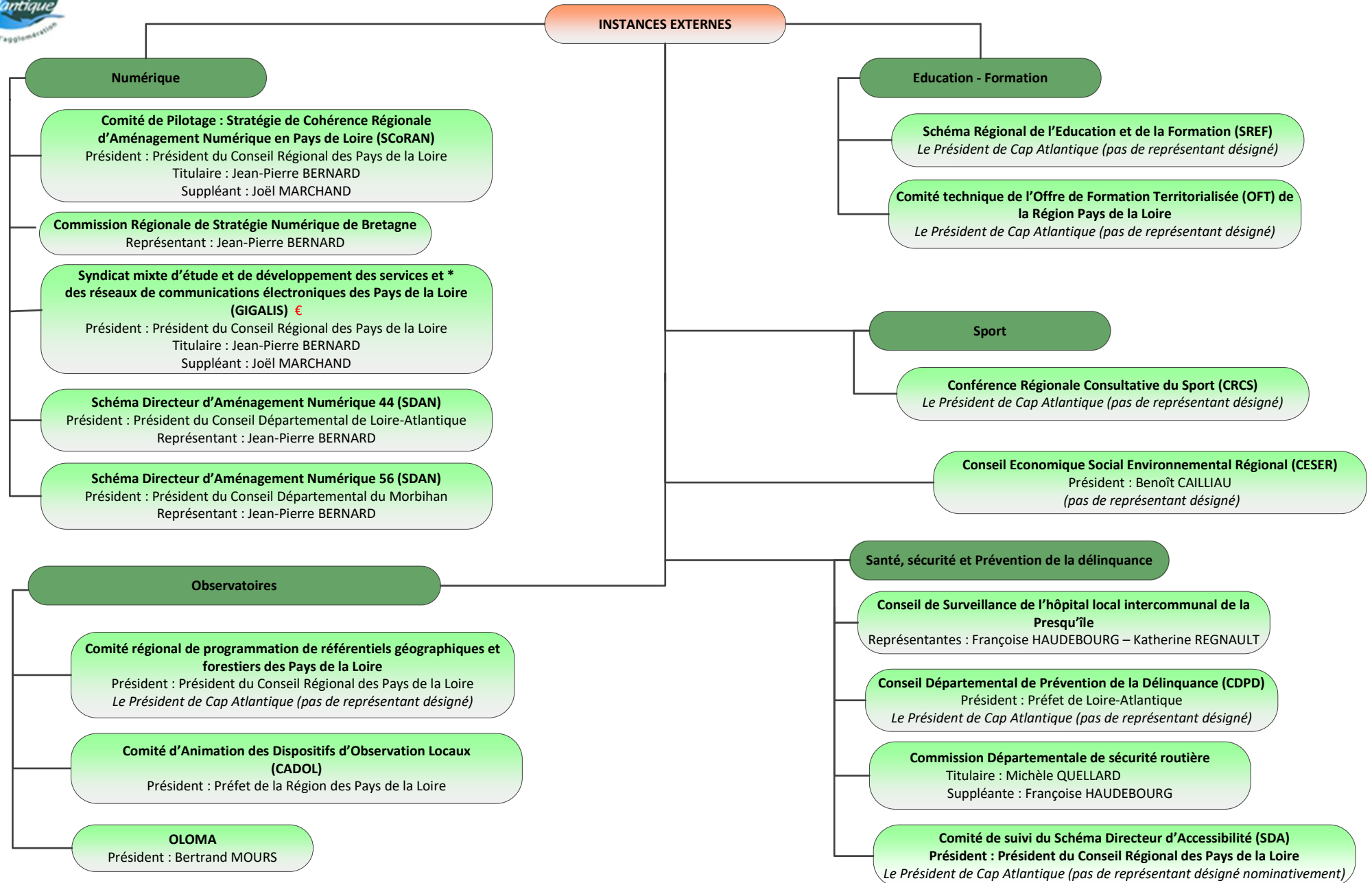


# ORGANIGRAMME INSTITUTIONNEL DE LA MANDATURE 2014-2020

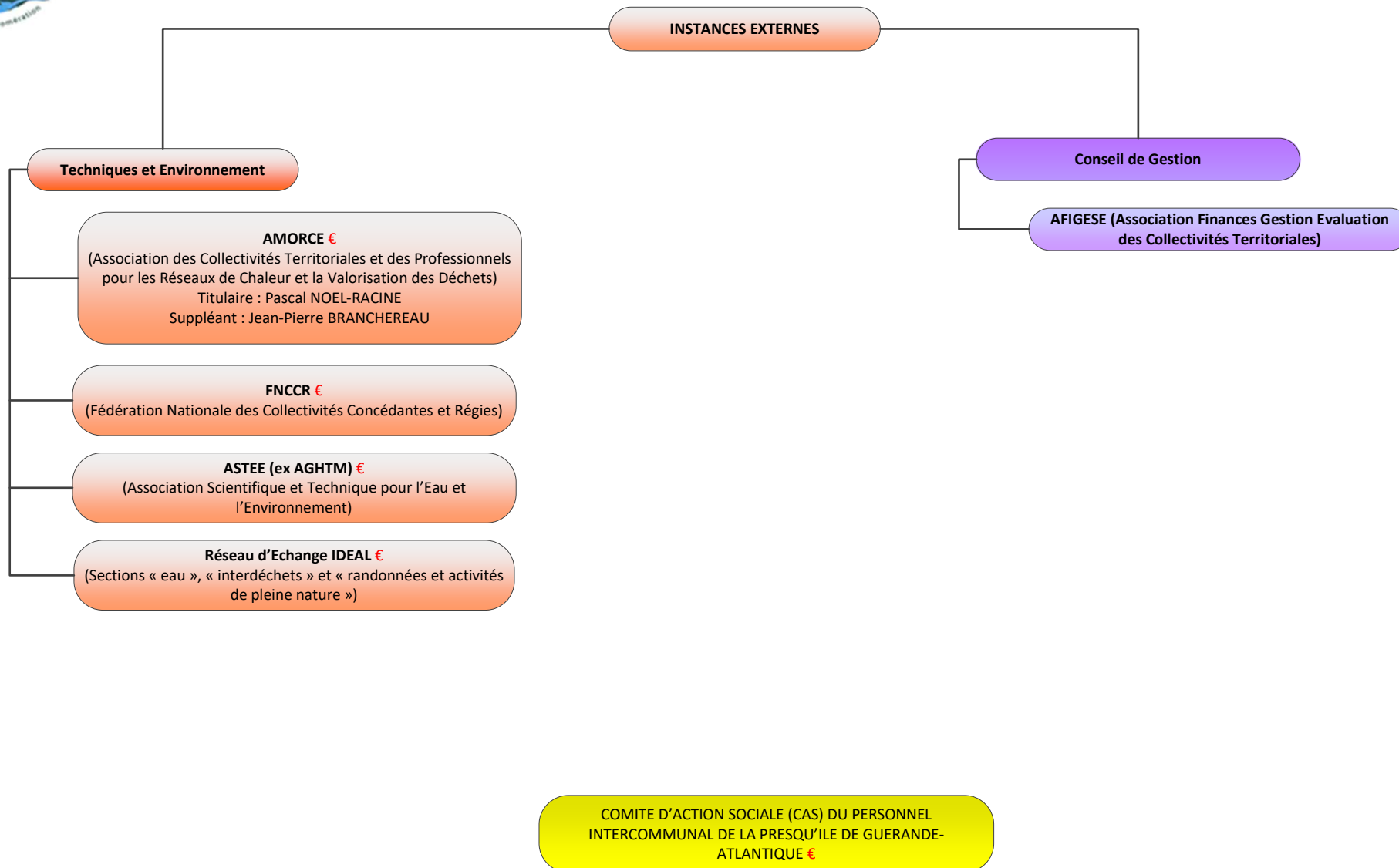


# ORGANIGRAMME INSTITUTIONNEL DE LA MANDATURE 2014-2020





# ORGANIGRAMME INSTITUTIONNEL DE LA MANDATURE 2014-2020



# ORGANIGRAMME INSTITUTIONNEL DE LA MANDATURE 2014-2020

**PRINCIPALES AUTRES STRUCTURES €  
SUBVENTIONNEES OU PARTENAIRES  
sur la base de programmes d'actions définis**

